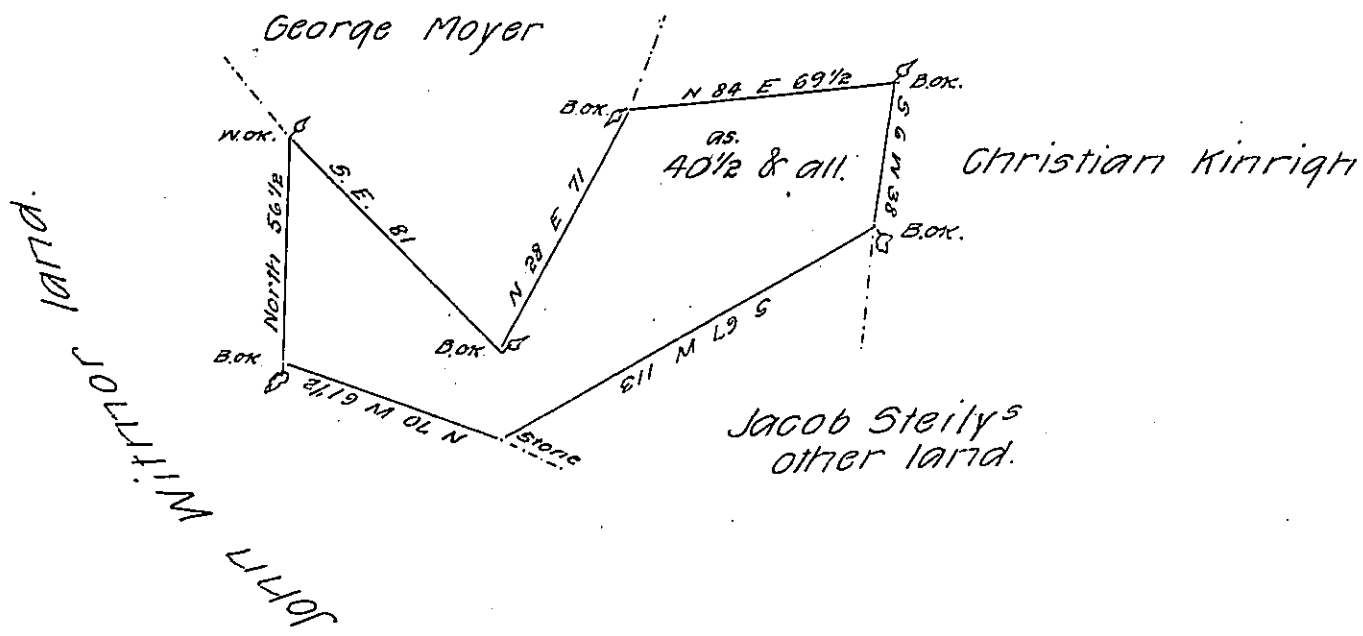


Gasper Sheivly



A draught of forty acres and a half of land and the usual allowance, sioblate in Warwick Township Lancaster County it being part of eighty one acres of land and allowance which was surveyed by John Scull the 25 day of November 1760 in pursuance of a warrent dated the 16th day of May 1751 granted to Jacob Steily, afterwards divided by Thomas Clark late Deputy Surveyor. I do certify that I have examined the Courses and distances round the above draught find it to contain the quantity of acres above mentioned, a copy of the original return, and ~~and~~ the divisions made by Thomas Clark remaining in my office at Mannheim, 13 March 1805

Samuel Cochran Esquire
Surveyor General of Pennsylvania

Sam^l Ensminger D.S.

IN TESTIMONY that the above is a copy of the original remaining on file in the Department of Internal Affairs of Pennsylvania, made conformably to an Act of Assembly approved the 16th day of February 1833, I have hereunto set my hand and caused the Seal of said Department to be affixed at Harrisburg, this twenty-fifth day of January 1907.

Leach B. ...
Secretary of Internal Affairs